

From demand to design, we precisely meet every material requirement, offering high-efficiency crushing technology and creating custom crushing equipment tailored to you.

A New Standard in Crushing Performance

粉碎性能新典範

“

● CRUSHER ● MIXER

From demand to design, we precisely meet every material requirement, offering high-efficiency crushing technology and creating custom crushing equipment tailored to you.



www.shuen-li.com

slmachinery@shuen-li.com.tw

+886 - 6 - 2052976 . 2052986 . 2053548

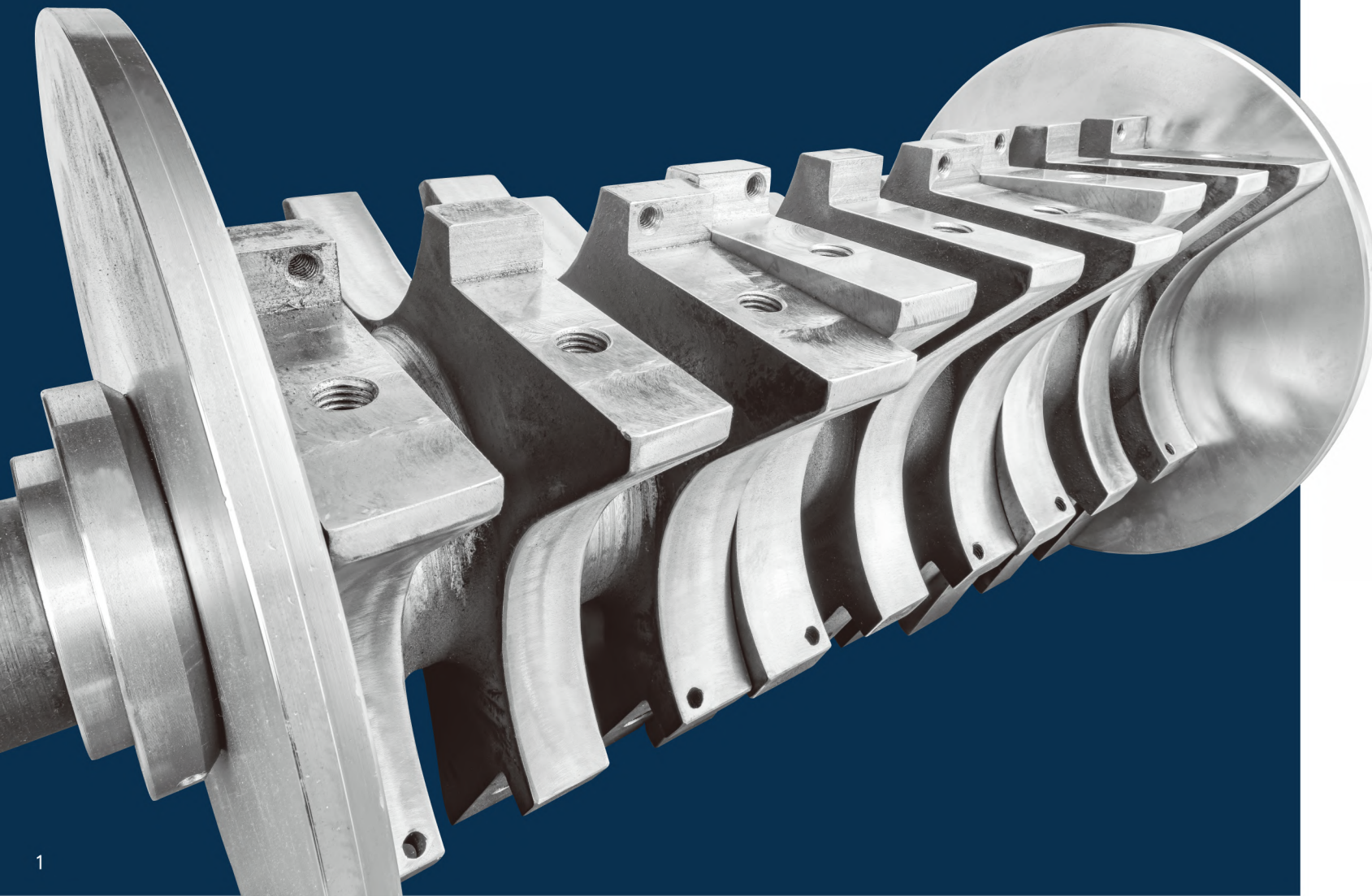
+886 - 6 - 2052493

No. 93, Alley 371, Lane 942, Dawan Rd. YongKang District, Tainan City, Taiwan

Over 20 Years of Professional Experience Innovative Design Concepts

Established in 1996, Shuen Li Machinery Co., Ltd. designs and manufactures a wide range of crushers and mixers. With more than 20 years of technical experience, in combination with outstanding R&D capabilities, Shuen Li has constantly launched various crushers with superior performance. Additionally, Shuen Li also offers customized products to help customers solve their production problems.

Shuen Li crushers integrate many fine features, such as unique design, powerful shearing force, high quality, safety, and maximum durability, and have won customer recognition and long-term support. Shuen Li products have obtained the certification of European CE safety mark, and have been widely sold in Taiwan and all over the world.



二十多年專業歷練 創新設計理念

創立於1996年的舜立機械廠有限公司，專業設計、製造高品質粉碎機。歷經二十多年的專業技術經驗累積，配合卓越的研發能力，舜立不斷推出各種優異性能的粉碎機。此外，舜立也可依客戶需求，提供客製化產品，為客戶解決生產所面臨之問題。

舜立粉碎機以獨特設計，剪切力大、高品質、安全、堅固耐用，贏得客戶的肯定及長期支持。舜立產品已取得歐洲CE安全標誌的認證，產品廣泛銷售於台灣及世界各地。

Immediate Recycling Crusher

隨機粉碎系列

2HP - 15HP



FEATURES

- Specially designed claw-blades provide powerful cutting force.
- Low horsepower, low rotation speed, high torque and energy saving.
- Small volume, multi-purpose and with convenient movement. The material inlet opening can be adjusted for added convenience in material infeed.
- Double-layer sound insulation design provides a significant reduction of noise value.
- Upon request, customized specifications are available.

特性

- 爪刀特殊設計，剪裁力大
- 小馬力、低轉速、高扭力、節省能源
- 體積小、多用途、移動輕巧、入料口可隨意調整、投料方便
- 雙層隔音設計，噪音值大幅度降低
- 可依客人需求，提供客製化產品

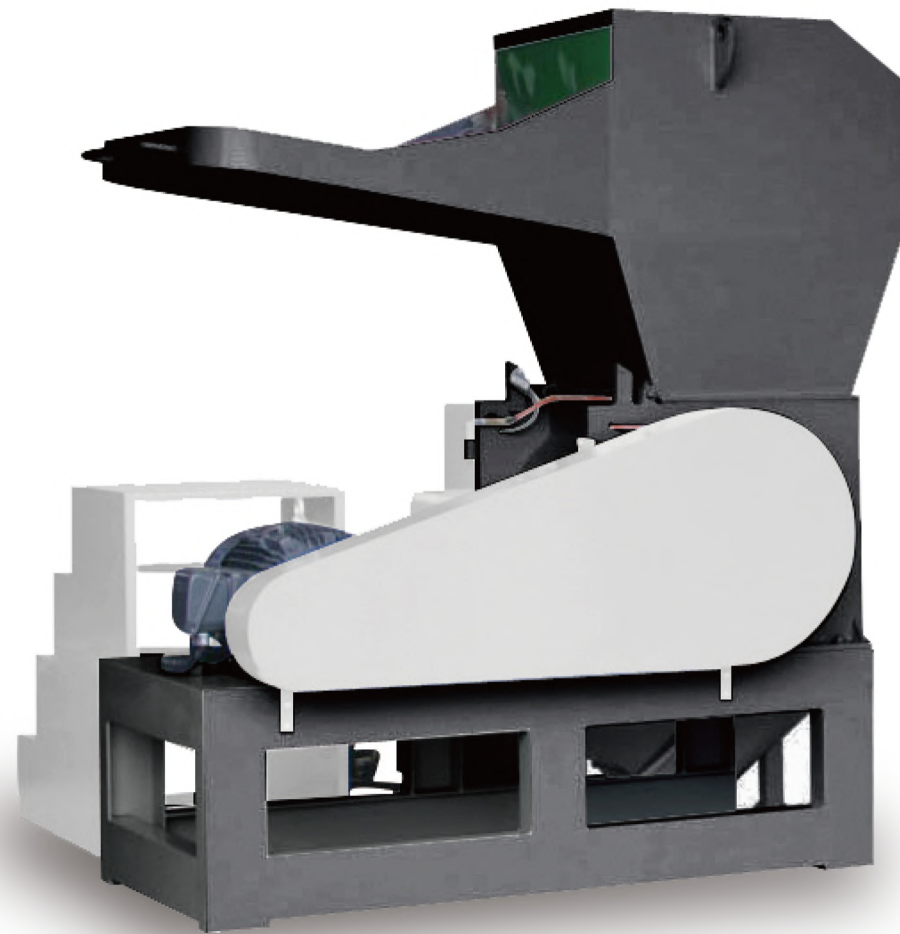
規格表	SPECIFICATION								
型號	CE Model		SH-1117					SH-1117	
型式	Type		SH-011	SH-012	SH-013	SH-014	SH-015	SH-016	SH-017
馬力	Motor	HP	2	3	5	7.5	10	15	15
入口尺寸	Crush Chamber	mm	250 x 200	300 x 200	320 x 220	380 x 240	380 x 240	450 x 320	510 x 350
固定刀	Fixed Blade	Pcs	2	2	2	2	2	2	2
迴轉刀	Rotary Blade	Pcs	15	18	6	6	9	6	9
工作能力	Capacity	kg / HR	100 - 150	150 - 200	150 - 250	150 - 350	160 - 450	200 - 500	250 ~ 600
重量	Weight	kg	250	280	380	560	580	800	1200
機械尺寸	Dimension	mm	650 x 500 x 1300	650 x 750 x 1300	1150 x 850 x 1500	1350 x 900 x 1600	1350 x 900 x 1600	1450 x 950 x 1700	1600 x 1000 x 1830

如有任何客製需求，歡迎來電洽詢 本公司保有修改規格之權利，不另行通知 When customized specifications are required, contact the manufacturer. Specifications shown in this catalog are subject to change without prior notice.

High Efficiency Heavy Duty Crusher

高效能強力粉碎系列

20HP - 40HP



FEATURES

- A medium sized crusher with high productivity.
- The inside of the machine is specially designed for easy cleanup.
- The front and back walls at the inlet opening are double-wall structure for dramatically reducing noise.
- The motor is connected to control box and equipped with overload protection device.
- Equipped with a safety switch that increases the safety of the machine.
- Cutter layout is designed with various shearing angles for powerful shearing force, allowing a wide range of plastic products to be crushed with ease.

特性

- 中型高強度粉碎機，高產能
- 機械內部特殊設計，易整理
- 入料口前後壁為雙層壁結構，大幅降低噪音
- 馬達連接控制箱並裝具有過載保護裝置
- 加裝安全開關，提高機台安全性能
- 多種刀具剪切角度配置，剪切力道強勁，可輕易粉碎各種製品



規格表	SPECIFICATION					
型號	CE Model		SH-1821			
型式	Type		SH-018	SH-019	SH-020	SH-021
馬力	Motor	HP	20	20	30	40
入口尺寸	Crush Chamber	mm	510 x 350	560 x 400	560 x 500	660 x 500
固定刀	Fixed Blade	Pcs	2	2	2	2
迴轉刀	Rotary Blade	Pcs	9	9	9	9
工作能力	Capacity	kg / HR	350 - 600	450 - 1200	500 - 1200	550 - 1300
重量	Weight	kg	1200	1500	2000	2500
機械尺寸	Dimension	mm	1700 x 1080 x 1830	1900 x 1150 x 2000	2100 x 1180 x 2200	2200 x 1270 x 2200

如有任何客製需求，歡迎來電洽詢 本公司保有修改規格之權利，不另行通知 When customized specifications are required, contact the manufacturer. Specifications shown in this catalog are subject to change without prior notice.

High Efficiency Heavy Duty Crusher

高效能強力粉碎系列

50HP - 75HP - 100 HP



FEATURES

- Specially designed large material inlet opening makes the machine suitable for mass crushing application.
- This machine is ideal for crushing large products, which can be crushed directly without the need to cut them into smaller parts. This reduces manpower needs while increasing productivity.
- The cutterhead consists of various sets of blades. The removable type rotary blades allow for easily removing and installing a single blade. The machine exhibits powerful and smooth cutting for high crushing efficiency.
- The crushing blades are manufactured from high quality alloy steel (SKH2 and SKD-11), hardened (hardness 52° ~ 56°) for maximum sharpness and durability.
- The cutter shaft is supported by two bearings at both ends, ensuring outstanding stability during crushing.
- Water cooling provides excellent heat dissipation. Supported by roller bearings for maximum stability.

特性

- 特殊設計超大入口，適合大量粉碎應用
- 本機適用於大型物件之粉碎，不需鋸開，即可直接投入粉碎，有助於節省人力且提高產能
- 多組刀片組合，可拆換式單片迴轉刀，拆裝容易，展現強勁順暢的切削力道，粉碎效率極高
- 粉碎刀刃採用高級合金鋼材(SKH2及SKD11)製成，經熱處理硬化(硬度HRC52度-56度)，鋒利耐用
- 刀軸兩端各有兩個軸承支撐，具有更佳粉碎穩定性
- 水冷卻設計，散熱性佳，採用滾柱軸承，支撐力最穩固

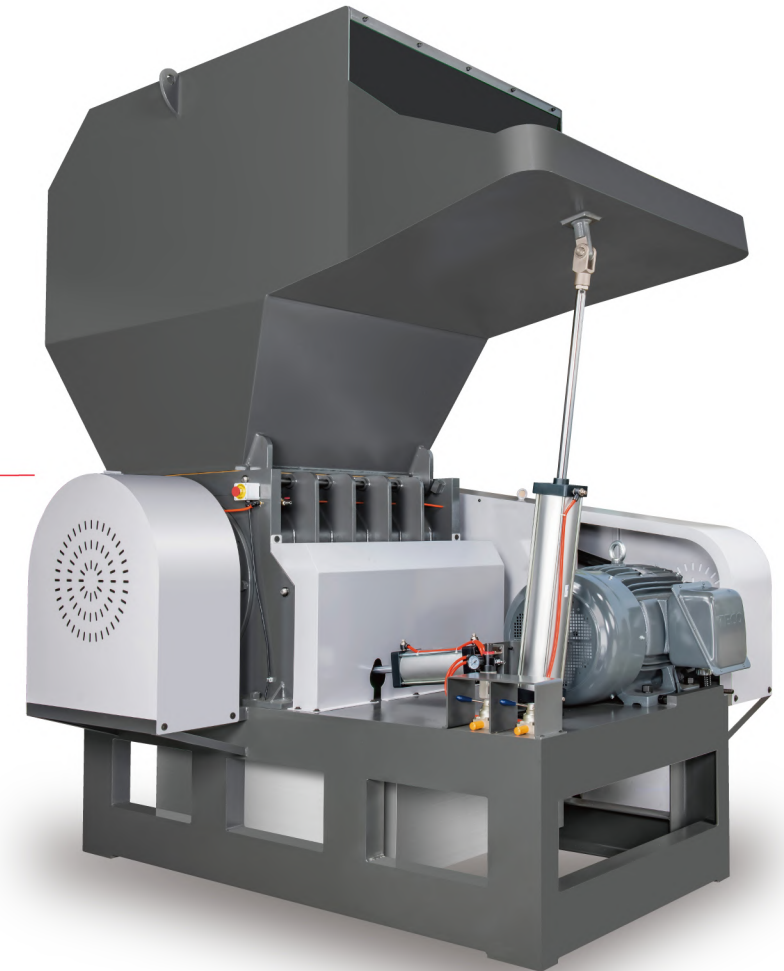


Features

- By blowing gas into the crushing chamber through an air duct, a cooling effect is achieved. Alternatively, a water cooling system can be implemented based on customer requirements to reduce the temperature during the crushing process.

特性

- 經由風管將氣體吹入粉碎室達到散熱的效果，也可以依客人需求改用水冷卻系統，讓機台粉碎過程中，降低溫度。



規格表	SPECIFICATION					
型號	CE Model		SH-2224			
型式	Type		SH-022	SH-023	SH-024	SH-024-1
馬力	Motor	HP	50	75	100	100
入口尺寸	Crush Chamber	mm	760 x 600	1000 x 760	1000 x 760	1000 x 760
固定刀	Fixed Blade	Pcs	2	4	4	4
迴轉刀	Rotary Blade	Pcs	9	12	12	21
工作能力	Capacity	kg / HR	650 - 1400	950 - 1700	1100 - 2000	1100 - 2000
重量	Weight	kg	2950	4350	4550	5350
機械尺寸	Dimension	mm	2310 x 1500 x 2400	2600 x 2100 x 3000	2600 x 2100 x 3500	2600 x 2100 x 3500

如有任何客製需求，歡迎來電洽詢。本公司保有修改規格之權利，不另行通知。 When customized specifications are required, contact the manufacturer. Specifications shown in this catalog are subject to change without prior notice.

High Efficiency Heavy Duty Crusher (Large Type)

高效能強力粉碎系列(大型)

125HP - 150HP



FEATURES

- Customized material inlet opening allows for direct crushing of large parts with the need to cut them up beforehand.
- This machine is suitable for extra large plastic products, such as chemical drums of over 50 gallons, plastic pallets, bumpers, etc. This reduces manpower needs while increasing productivity.
- The crushing blades are manufactured from special grade steel, heat treated to a proper hardness for maximum wear resistance and extended service life.
- The cutter shaft is firmly supported by roller bearings with special shaft design.
- Easy to move/install blades and clean the sieving screen.
- Water cooling provides excellent heat dissipation while dramatically reducing wear of machine parts.
- The motor is connected to control box and equipped with overload protection device. In addition, a safety switch is equipped for increasing operational safety.
- Material outfeed from the base can be custom designed to help customers solve problems.

特性

- 客製化入料口設計，可不需裁切產品即可投料粉碎
- 此機型適合粉碎各種特大型塑膠物件，例如：50加侖以上化學桶、塑膠棧板、保險桿...等，節省人力並且提高產能
- 精選特級鋼材製成的粉碎刀，經熱處理後達到適當的刀材硬度，耐磨損，延長使用率
- 採用滾柱軸承，支撐力最穩固並搭載特製軸心設計
- 拆裝刀具及清理篩網，簡易方便
- 水冷卻設計，極佳的散熱性，減少機器耗損率
- 馬達搭配控制箱，具有過載保護裝置，另外加裝安全開關，提升使用安全性
- 底座出料設計皆可提供客製化需求，解決顧客之問題



規格表	SPECIFICATION		
型號	CE Model		SH2225
型式	Type		SH-025
馬力	Motor	HP	125 - 150
入口尺寸	Crush Chamber	mm	1300 x 760
固定刀	Fixed Blade	Pcs	4
迴轉刀	Rotary Blade	Pcs	27
工作能力	Capacity	kg / HR	2000 - 3000
重量	Weight	kg	8000
機械尺寸	Dimension	mm	2800 x 2660 x 3450

如有任何客製需求，歡迎來電洽詢 本公司保有修改規格之權利，不另行通知 When customized specifications are required, contact the manufacturer. Specifications shown in this catalog are subject to change without prior notice.

Silent Grinding Machine

靜音粉碎系列

2HP - 15HP

20HP - 30HP



Features

- Soundproof enclosure in combination with sound insulation cotton.
- The sound insulation chamber is equipped with two fans that not only reduce the temperature in the chamber, but also boost air circulation effect.
- All doors on the sound insulation chamber are moveable, and are easy to remove for convenience in cleaning the inside of the machine.

特性

- 靜音外罩加裝隔音棉設計
- 隔音室附有兩組風扇，降低隔音室內部溫度，有利於空氣循環效果
- 隔音室皆為活動門板，拆裝方便，機台內部容易清潔

規格表	SPECIFICATION												
型號	CE Model		SH-1117A					SH-1117A			SH-1820A		
型式	Type		SH-011A	SH-012A	SH-013A	SH-014A	SH-015A	SH-016A	SH-017A	SH-018A	SH-019A	SH-020A	
馬力	Motor	HP	2	3	5	7.5	10	15	15	20	20	30	
入口尺寸	Crush Chamber	mm	250 x 200	300 x 200	320 x 220	380 x 240	380 x 240	450 x 320	510 x 350	510 x 350	560 x 400	560 x 500	
固定刀	Fixed Blade	Pcs	2	2	2	2	2	2	2	2	2	2	
迴轉刀	Rotary Blade	Pcs	15	18	6	6	9	6	9	9	9	9	
工作能力	Capacity	kg / HR	100 - 150	150 - 200	150 - 250	150 - 350	150 - 450	200 - 500	250 - 600	350 - 600	450 - 1200	500 - 1200	
重量	Weight	kg	270	300	400	630	650	850	1250	1260	1600	2000	
機械尺寸	Dimension	mm	900 x 850 x 1300	900 x 850 x 1300	1250 x 900 x 1500	1350 x 1000 x 1600	1350 x 1000 x 1600	1600 x 1050 x 1700	1800 x 1200x 1830	1800 x 1200x 1830	2100 x 1300 x 2000	2100x 1300 x 2000	

如有任何客製需求，歡迎來電洽詢 本公司保有修改規格之權利，不另行通知 When customized specifications are required, contact the manufacturer. Specifications shown in this catalog are subject to change without prior notice.

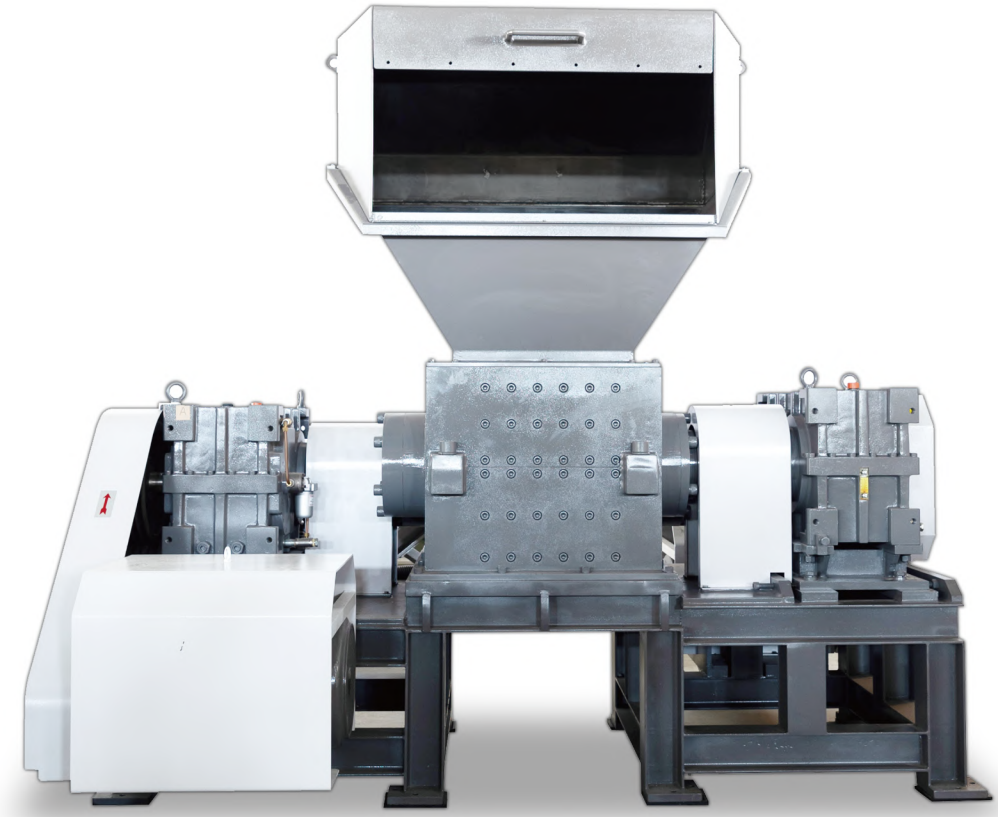
Twin-Shaft Shredder

雙軸破碎機

120HP



120HP



Features

- The shredder is suitable for the initial crushing of oversized products. It is driven by dual shafts, providing strong destructive force and delivering effective results in breaking down products.
- The blades material uses SCM440, achieving a balance between toughness and wear resistance, resulting in a long service life for the blades.
- Customized caliber design.

特性

- 本機適用於超大型產品的初次破碎，雙軸帶動，破壞力強勁對產品破壞較果好。
- 刀器材質使用SCM440韌性跟耐磨性達到平衡，刀具使用期限長。
- 客製化口徑設計

規格表	SPECIFICATION			
型式	Type		SC-002AB	SC-002AC
馬力	Motor	HP	60 x 2	60 x 2
入口尺寸	Crush Chamber	mm	835 x 660	1000 x 660
迴轉速	Revolutions Per Minute	RPM	15 & 16	15 & 16
迴轉直徑	Rotation Diameter	mm	465	465
機械尺寸	Dimension	mm	2785 x 2340 x 1570	3670 x 2380 x 1570

如有任何客製需求，歡迎來電洽詢。本公司保有修改規格之權利，不另行通知。 When customized specifications are required, contact the manufacturer. Specifications shown in this catalog are subject to change without prior notice.

Conveyors for Crushed Material

粉碎料輸送系列

Screw Conveyor

螺旋輸送機



Features

- Easy to operate.
- High delivery efficiency, convenient mobility and less space occupation.
- All sizes are customized to suit various crushing machines.

特性

- 人力操作容易
- 輸送效率高，機動性高且不占空間
- 尺寸皆為客製化搭配粉碎機台做使用

Storage Tank and Blower

集料桶與鼓風機



Features

- The crushed materials are delivered via a blower to the material storage tank for packaging.
- The material outfeed from the storage tank can be packed in a 25 kg bag or 1 ton bag. (Can be customized.)

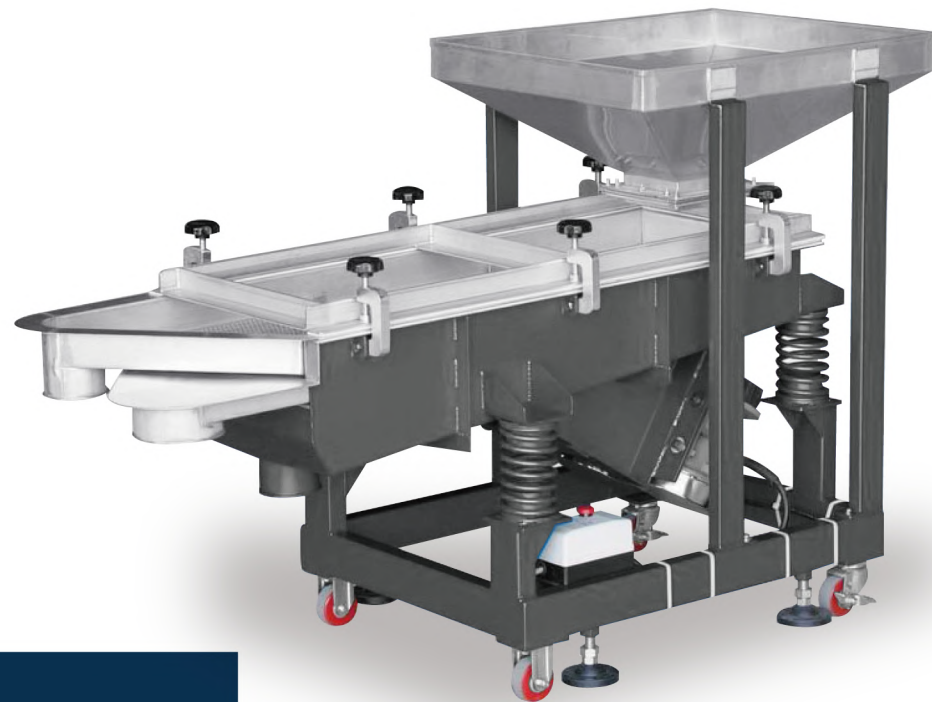
特性

- 塑膠料粉碎後成品，經由鼓風機輸送至集料桶進行包裝
- 集料桶出料型式分25kg袋裝及1噸袋裝(可依需求製作)

Conveyors for Crushed Material

粉碎料輸送系列

Horizontal Vibrating Sieving Machine 篩選機



Features

- Double-layer filter screen can sieve fine powder dust, making product quality more stable.
- Robust machine structure, uniform screening, and high resistance for long time continuous operation.

特性

- 雙層濾網，可過濾出細小的粉塵，使成品品質更加穩定
- 機座結構堅固，篩選均勻，可耐長時間連續作業

規格表	SPECIFICATION		
型號	Model		SH-420
馬力	Motor	HP	1/4
篩網孔徑	Screen mesh	mm	6&2
重量	Weight	kg	100
機械尺寸	Dimension	mm	1700 x 670 x 1060

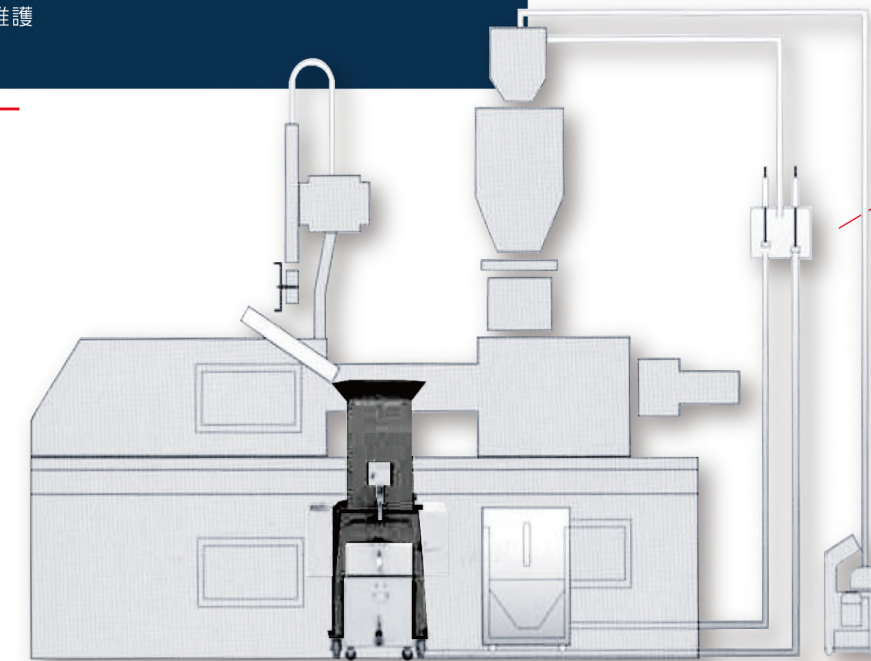
Proportional Valve 混合比例器

Features

- Allows for setting the ratio of new and used materials or mixing materials in combination with the operation of material suction unit.
- Equipped with a timing switch.
- Easy to clean and maintain.

特性

- 可設定新舊料比例、混料皆可配合吸料機運作
- 設有定時開關
- 容易清潔與維護



規格表	SPECIFICATION			
型號	Model		SP-38	SP-50
管徑	Conveying tube I.D.	mm	38	50

Mixer Series

拌料機系列

Economical Plastic Mixer 經濟型拌料機

SH-001 - SH-002



Features

- No mixing blade design makes the mixer suitable for powder material.
- Material tank is manufactured from stainless steel (SUS304).
- The smooth material tank structure makes it easy to clean and provides more uniform mixing.
- Equipped with a timing switch.

特性

- 無攪拌葉片，適合粉狀料使用
- 桶身採用SUS304不銹鋼白鐵製成
- 料桶平滑易清理，攪拌更均勻
- 具定時開關設計

Universal Plastic Mixer 萬用型拌料機

SH-003 - SH-006



Features

- The removable stirring blades are easy to dismantle.
- 8 blade design allows the material at the bottom of the tank to be mixed uniformly.
- Material tank is manufactured from stainless steel (SUS304).
- Equipped with a timing switch.

特性

- 可拆式攪拌葉片拆卸容易
- 八片葉片設計，讓桶底的料也能均勻混合
- 桶身採用SUS304不銹鋼白鐵製成
- 安裝定時開關設計

規格表	SPECIFICATION							
型號	Model		SH-001	SH-002	SH-003	SH-004	SH-005	SH-006
馬力	Motor	HP	1/2	1	3	5	7.5	10
每次容量	Capacity	kg	50	100	50	100	150	200
重量	Weight	kg	70	90	130	160	200	300
機械尺寸	Dimension	mm	1090 x 1090 x 1500	1240 x 1240 x 1600	1180 x 1180 x 1390	1240 x 1240 x 1450	1350 x 1350 x 1570	1430 x 1430 x 1620

如有任何客製需求，歡迎來電洽詢。本公司保有修改規格之權利，不另行通知。 When customized specifications are required, contact the manufacturer. Specifications shown in this catalog are subject to change without prior notice.

Mixer Series

拌料機系列



Vertical Type Mixer (Heater type is optional)

立式混合機 (可另訂購加熱乾燥式)

SH-VM301 - SH-VM307

Features

- Employs the spiral circulated mixing method to enable material to be mixed more evenly and quickly.
- Suitable for mixing of crushed materials, new and recycled plastic pellets, and raw material.

特性

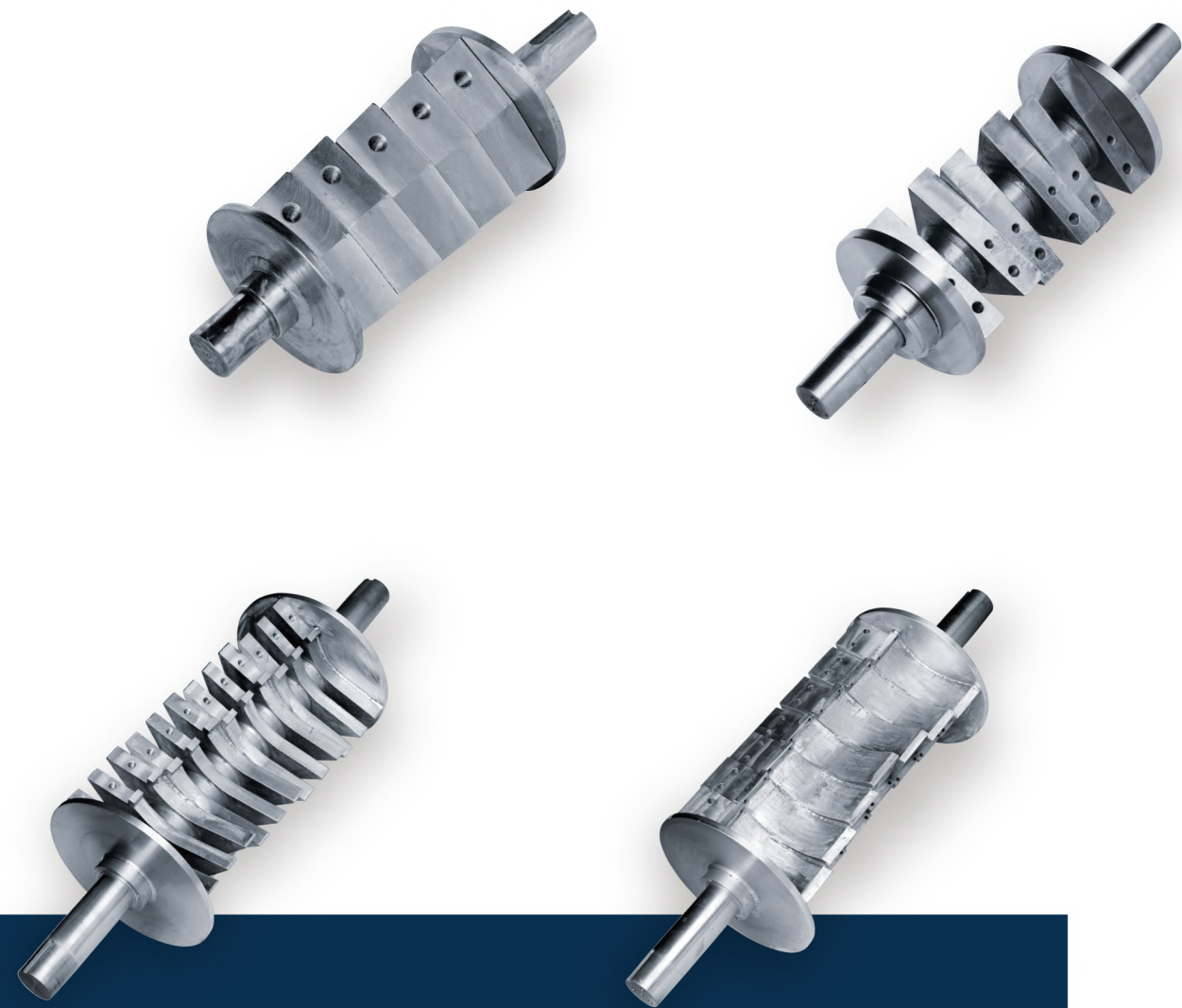
- 利用螺旋循環攪拌，使原料快速混合均勻
- 可用於粉碎料、塑膠粒新舊料與色母混合



規格表		SPECIFICATION							
型號	Model		SH-VM301	SH-VM302	SH-VM303	SH-VM304	SH-VM305	SH-VM306	SH-VM307
馬力	Motor	HP	3	5	5	7.5	10	15	30
每次容量	Capacity	kg / ton	500 kg	1 ton	1.5 ton	2 ton	3 ton	5 ton	10 ton
重量	Weight	kg	320	450	550	680	900	1450	3500
機械尺寸	Dimension	mm	1200 x 1200 x 2440	1200 x 1200 x 3320	1480 x 1480 x 3250	1780 x 1850 x 3400	1780 x 1850 x 4080	2080 x 2080 x 5180	2800 x 2800 x 5660

如有任何客製需求，歡迎來電洽詢。本公司保有修改規格之權利，不另行通知。 When customized specifications are required, contact the manufacturer. Specifications shown in this catalog are subject to change without prior notice.

All Series of Main Shaft 刀軸系列



Features

- Different spindle shafts are suitable for products made of various materials, particularly due to the differences in how the spindle shaft is combined with the knife holder. This design ensures that the spindle shaft has a longer lifespan and is less prone to breakage.

特性

- 不同刀軸適用於不同材質的產品，特別在於刀軸跟刀架的結合方式不同，使刀軸在使用期限更持久且不容易斷裂。

Crusher Cutter 粉碎刀



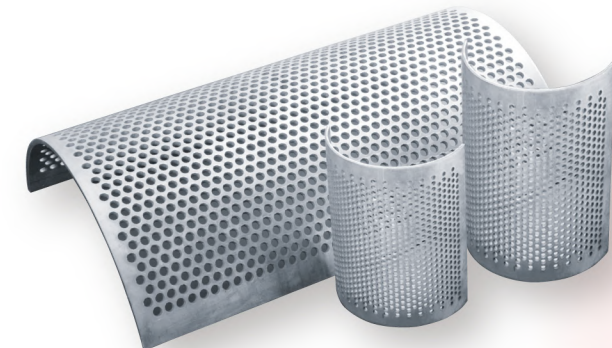
Features

- The crushing blades are manufactured from high quality alloy steel (SKH-2&SKD-11) hardened (hardness 52°-56°) for maximum sharpness and durability.

特性

- 刀具材質採用高級合金鋼材SKH2及SKD-11製成，經過熱處理優化(硬度HRC52-56度)，鋒利耐用。

Screen Mesh 篩網



Electricity Comparison Reference (3 Phase)

電力參考數值表(三相)

220V

*馬力 (HP) = horsepower *千瓦 (KW) = kilowatt *安培 (AMP) = Ampere

馬力(HP)	千瓦(KW)	安培(AMP)
2	1.5	6.4
3	2.2	9
5	3.7	14.6
7.5	5.5	21.8
10	7.5	27.5
15	11	40
20	15	53
30	22	76
40	30	102
50	37	124
75	55	189
100	75	248
125	90	287

380V

*馬力 (HP) = horsepower *千瓦 (KW) = kilowatt *安培 (AMP) = Ampere

馬力(HP)	千瓦(KW)	安培(AMP)
2	1.5	3.5
3	2.2	5
5	3.7	8.5
7.5	5.5	11.5
10	7.5	15.5
15	11	22.5
20	15	30
30	22	43
40	30	57
50	37	72
75	55	104
100	75	142
125	90	169

415V

*馬力 (HP) = horsepower *千瓦 (KW) = kilowatt *安培 (AMP) = Ampere

馬力(HP)	千瓦(KW)	安培(AMP)
2	1.3	3.2
3	1.9	4.5
5	3	7.4
7.5	4.5	10.8
10	6	14.4
15	8.5	20.6
20	11.5	27.7
30	17	40.8
40	22.7	54.8
50	26.9	64.8
75	40.5	97.7
100	53.1	127.9
125	60.7	146.3

440V

*馬力 (HP) = horsepower *千瓦 (KW) = kilowatt *安培 (AMP) = Ampere

馬力(HP)	千瓦(KW)	安培(AMP)
2	1.5	3.2
3	2.2	4.6
5	3.7	7
7.5	5.5	10.1
10	7.5	13.8
15	11	20.3
20	15	26.2
30	22	38.4
40	30	51.2
50	37	63.3
75	55	95
100	75	126.6
125	90	152.9